



Building the Capacity to Support Inclusive Practices

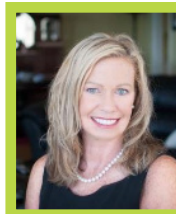
Inclusive practice refers to the instructional and behavioral strategies that improve academic and social-emotional outcomes for all students, with and without disabilities, in general education settings. During this professional learning session there will be exploration, activities, and in-depth discussions about strategies that build inclusive school culture & practices, relationships, maximize communication, and clarifies the roles and responsibilities of students and collaborative partners. Those who attend will examine a variety of methods that proactively maximize instructional time and time management using procedures, routines, and positive classroom management strategies that inform classroom and school-wide inclusive efforts. Finally, participants will utilize tools that support the achievement for all learners (students and teachers) through successful implementation and maintenance of clear student outcomes for learning while integrating evidence-based practices that provide broad access to curriculum and equal opportunity to demonstrate knowledge and skills. Participants will use the training resources and materials to design an Inclusive Practices Action Plan.

At the end of this workshop, participants will:

- Reflect on your current inclusive practices.
- Understand how to cultivate and sustain inclusive practices school-wide.
- Discover the five approaches used in a co-taught classroom.
- Examine evidence-based frameworks (UDL, PBIS, & SEL) along with curriculum for opportunities to cultivate and support inclusive practices.
- Develop an understanding of the cycle of support and building capacity.
- Create an Inclusive Practices Action Plan.

Who Should Attend

General and special education teachers, administrators, counselors, instructional coaches, TOSAs, and service support staff.



Presenter

Susan Hentz, renowned educational consultant, author, and teacher.

Date

Tuesday, November 5, 2019

Time

8:30 a.m. - 3:30 p.m.

Deadline

Tuesday, October 22, 2019

Attendee Limit

60

Registration Fee

\$100

(Includes materials, continental breakfast, and lunch.)

Location

Riverside County Office of Education
Conference Center
3958 Twelfth Street
Riverside, CA 92501
(Map on reverse.)

Please register at:



<http://rcoe.k12oms.org/>

Deadline

Tuesday, October 22, 2019

Registration Fee

\$100

Attendee Limit

60

Make payment payable to:

Riverside County Office of Education

Mail to:

Riverside County Office of Education
Attn: Princess Solomon, Administrator
P.O. Box 868
Riverside, CA 92502-0868

Note: No refunds after deadline date. No refunds for no-show participants. All cancellations must be made in writing before the deadline date.

For additional information, please contact:

Princess Solomon, Administrator | (951) 826-6304

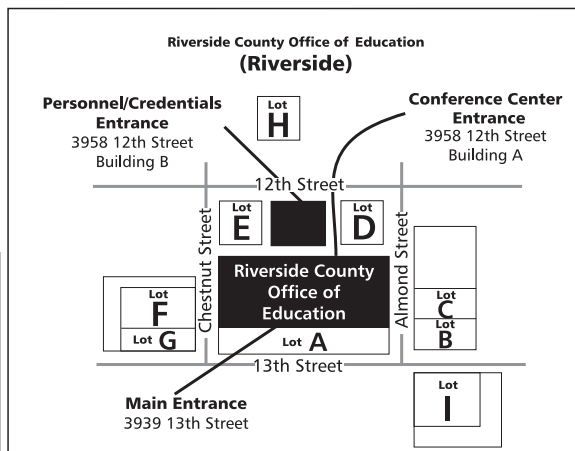
Riverside County Office of Education | Conference Center



**RIVERSIDE COUNTY
OFFICE OF EDUCATION**
JUDY D. WHITE, Ed.D.
County Superintendent of Schools

Parking Tips - Due to limited free parking:

We are unable to fully guarantee free parking to conference participants/visitors and strongly encourage car pooling. Please allow yourself sufficient time to locate parking at or near our office. Metered parking is available on designated streets.



**3958 Twelfth Street
Riverside, CA 92501**

